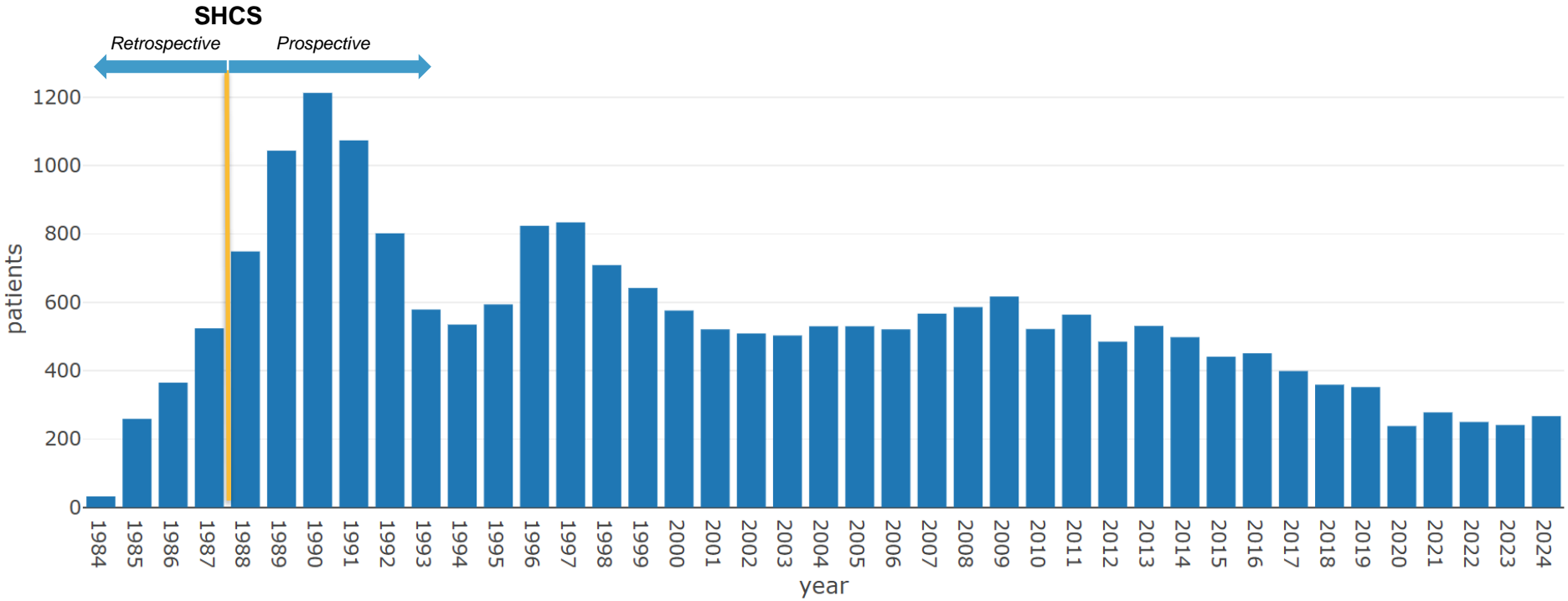
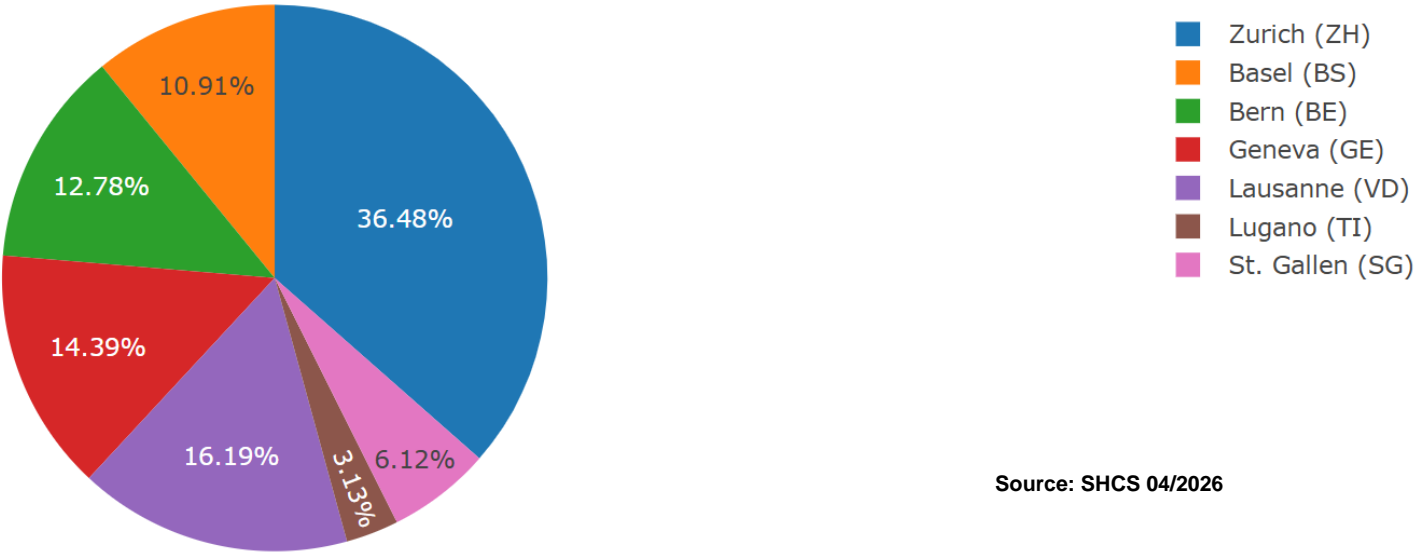


Figure 1: Patients newly registered each year in the Swiss HIV Cohort Study (SHCS), 1984 - 2024



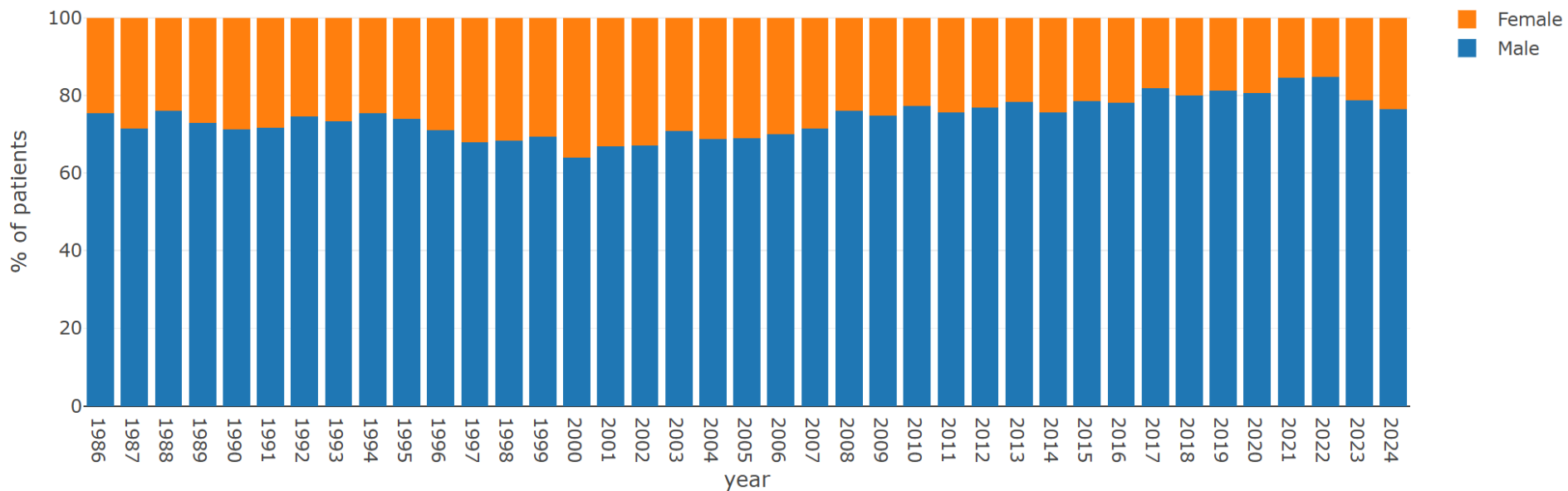
Source: SHCS 04/2026

Figure 2: Distribution of patients ever registered in the SHCS by clinical centre (N=22125)



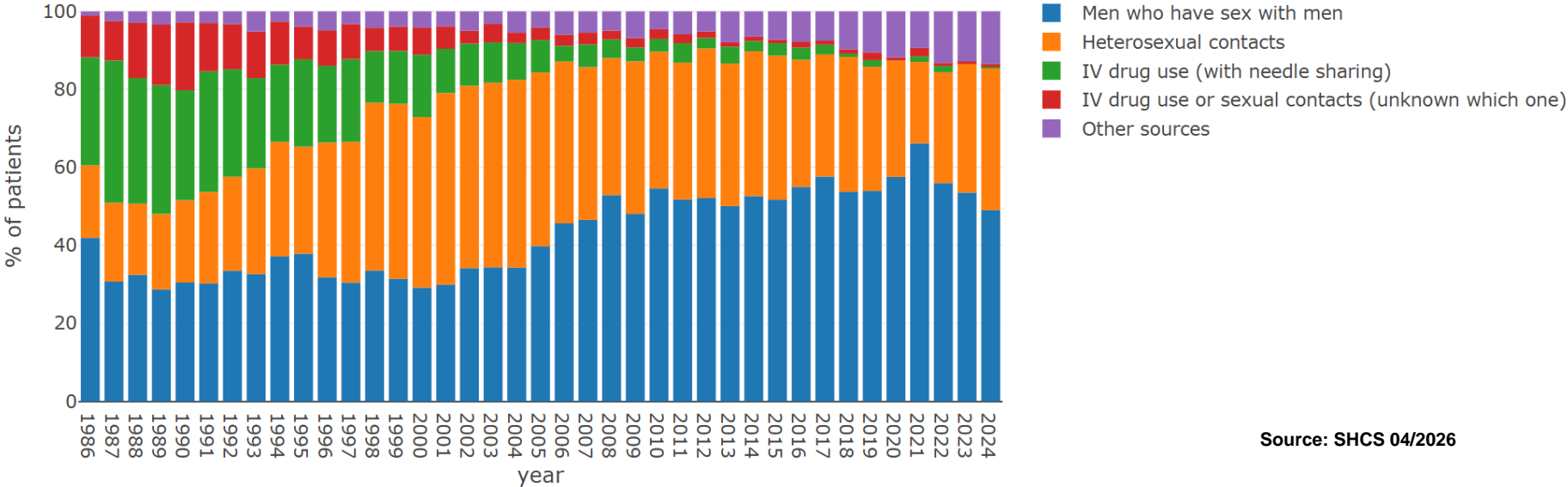
Source: SHCS 04/2026

Figure 3: Distribution of new patients registered each year in the SHCS by sex assigned at birth, 1986 - 2024



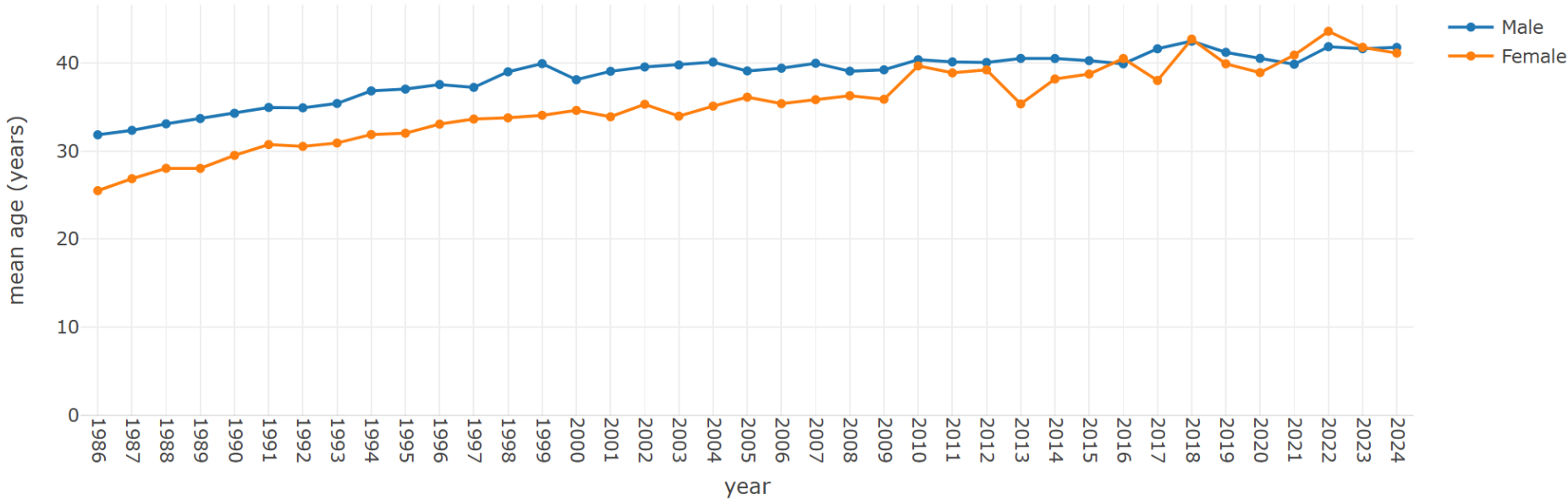
Source: SHCS 04/2026

Figure 4: Distribution of new patients registered each year in the SHCS by presumed mode of infection, 1986 - 2024



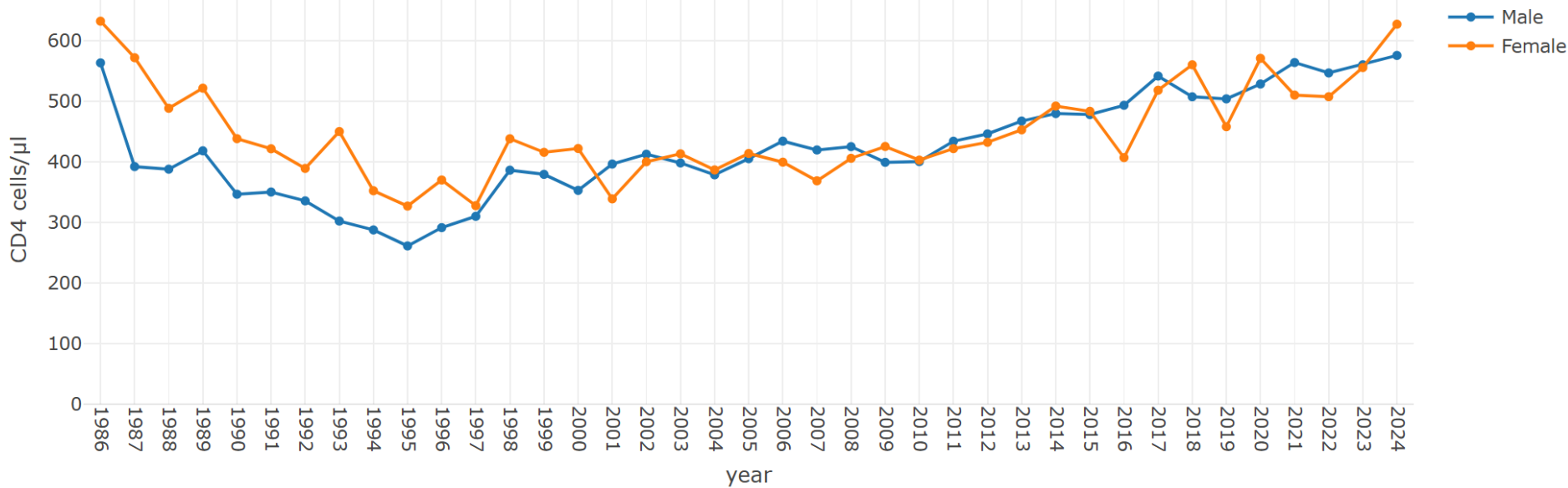
Source: SHCS 04/2026

Figure 5: Mean age at registration in the SHCS by sex assigned at birth, 1986 - 2024



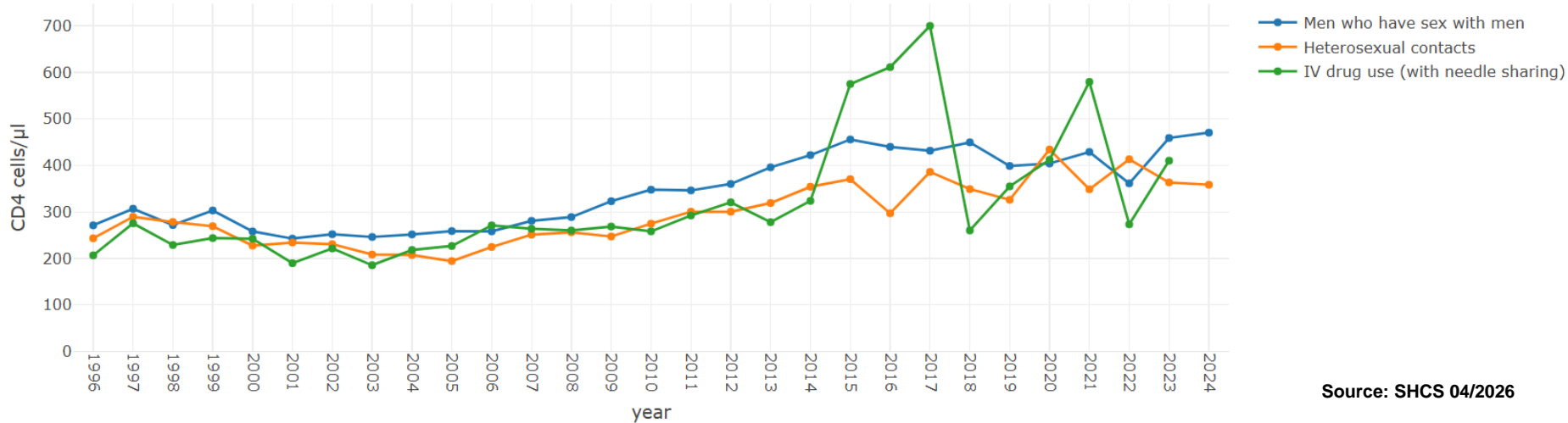
Source: SHCS 04/2026

Figure 6: Mean CD4 cell count at registration in the SHCS by sex assigned at birth, 1986 - 2024



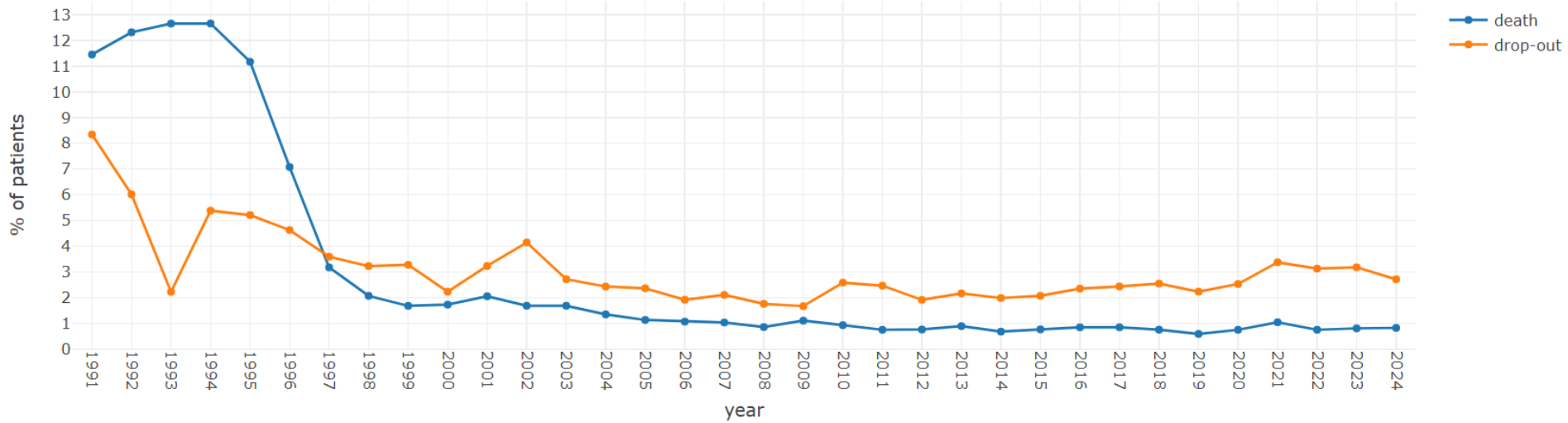
Source: SHCS 04/2026

Figure 7: Mean CD4 cell count at initiation of cART in treatment naive patients by presumed mode of infection in the SHCS, 1996 - 2024



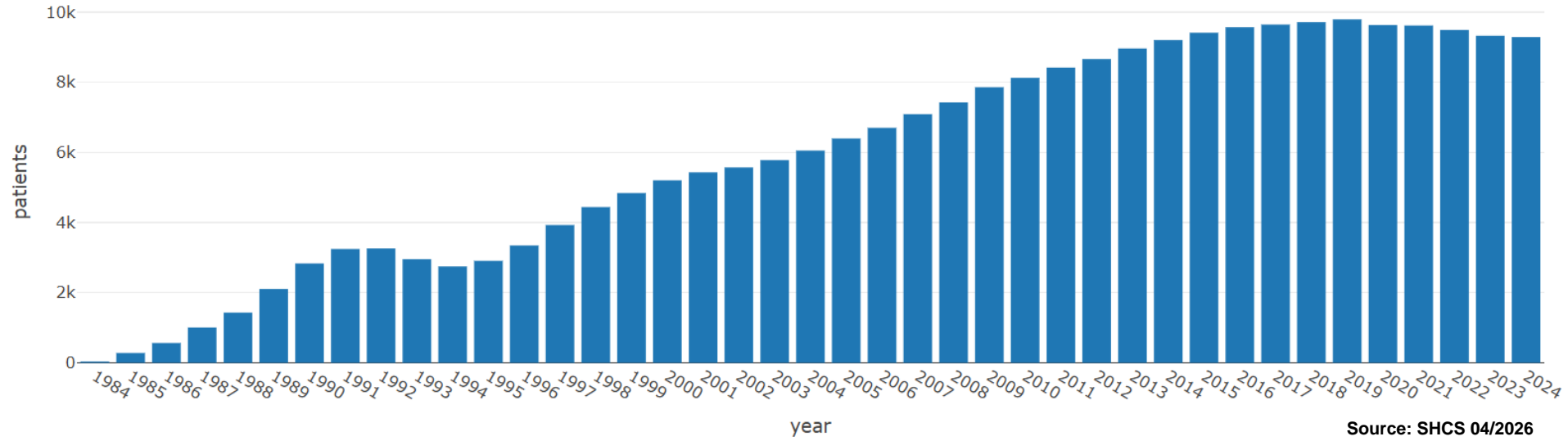
Source: SHCS 04/2026

Figure 8: Percentage of patients dying and dropping out in the SHCS, 1991 - 2024



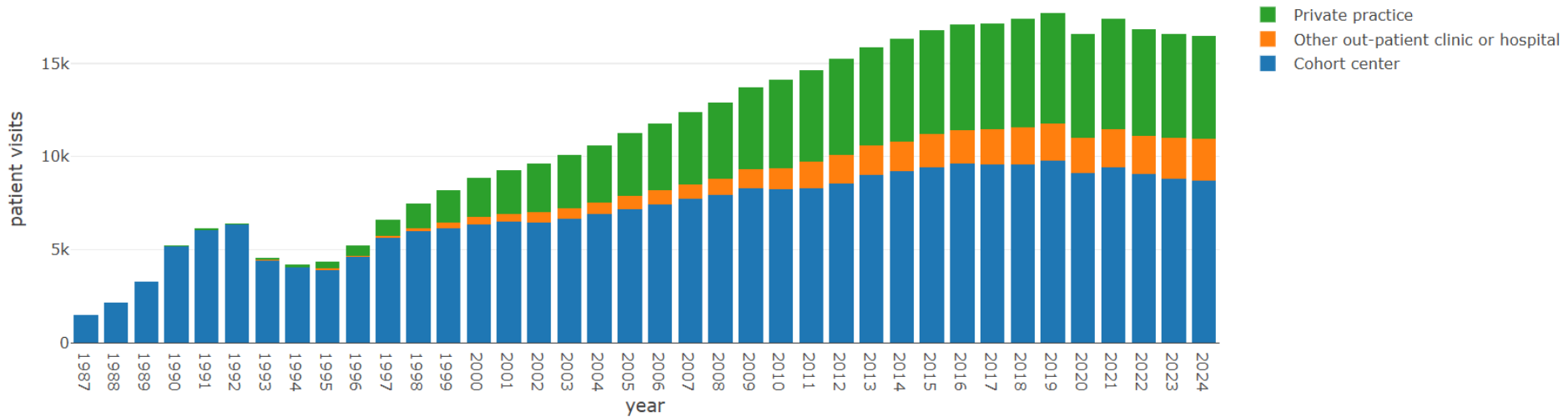
Source: SHCS 04/2026

Figure 9: Annual number of patients seen at least once in the SHCS, 1984 - 2024



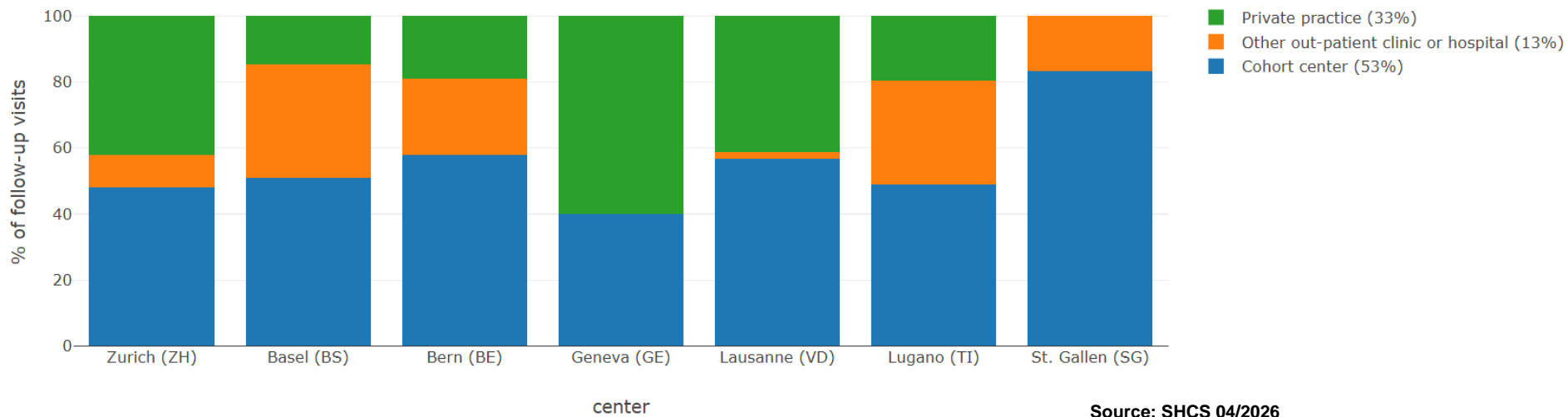
Source: SHCS 04/2026

Figure 10: Annual number of patient visits by type of health care provider in the SHCS 1987 - 2024



Source: SHCS 04/2026

Figure 11: Distribution of visits in the SHCS in 2024, by type of health care provider, by center



Source: SHCS 04/2026

Figure 12: Distribution of male patients actively followed in the SHCS in 2024, by presumed mode of HIV infection



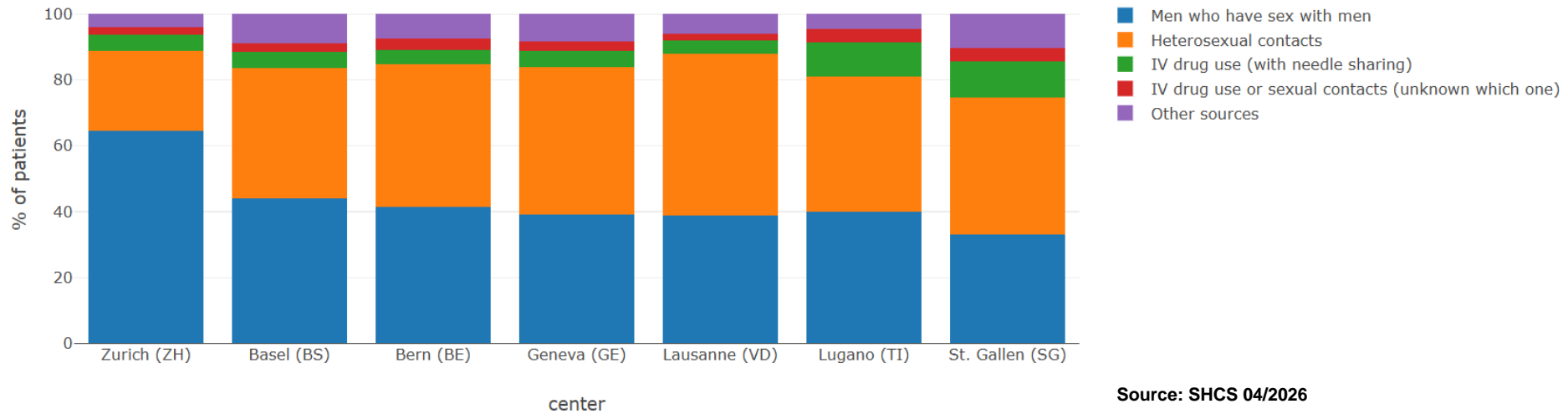
Source: SHCS 04/2026

Figure 13: Distribution of female patients actively followed in the SHCS in 2024, by presumed mode of HIV infection



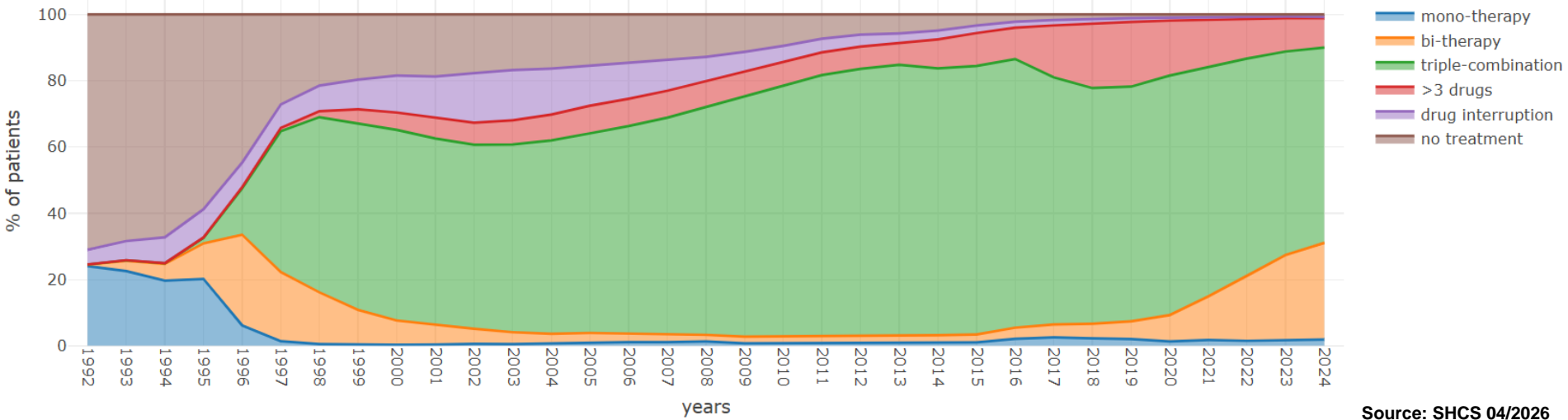
Source: SHCS 04/2026

Figure 14: Distribution of patients actively followed in the SHCS in 2024, by recruitment centre and presumed mode of HIV infection



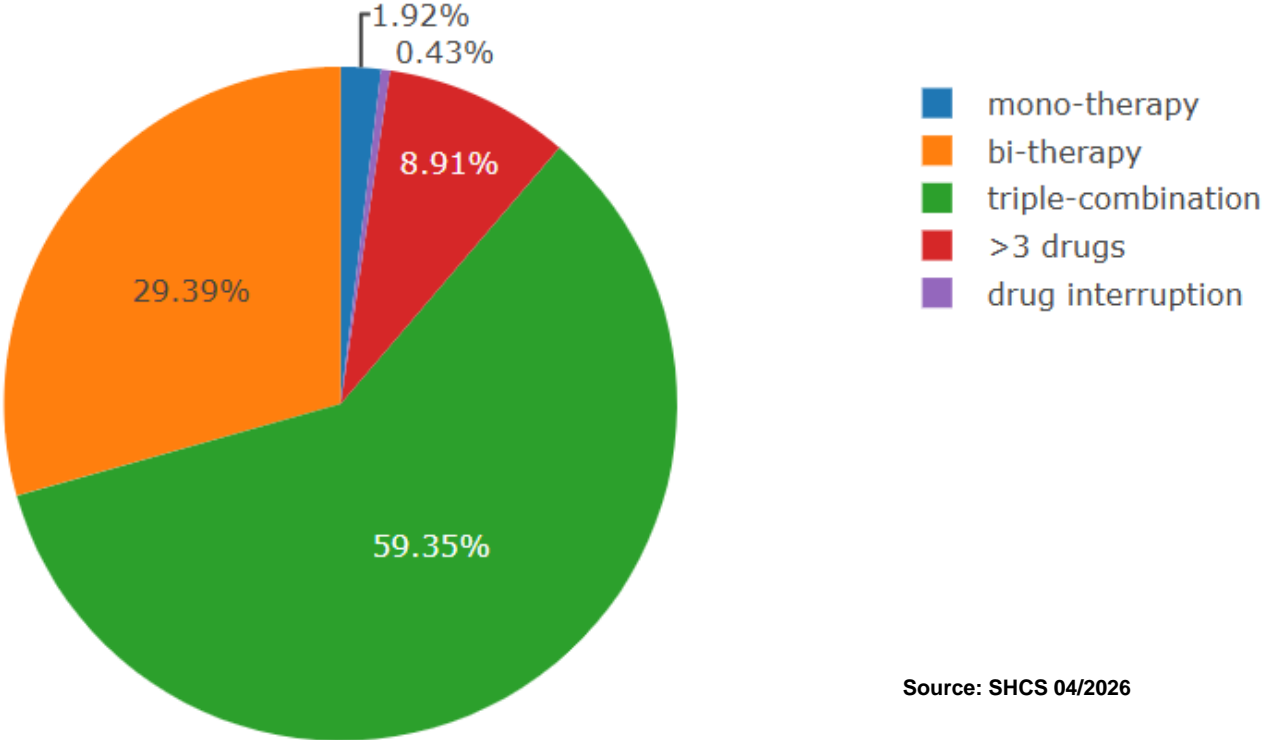
Source: SHCS 04/2026

Figure 15: Trends in use of antiretroviral therapy in the SHCS, 1992 - 2024



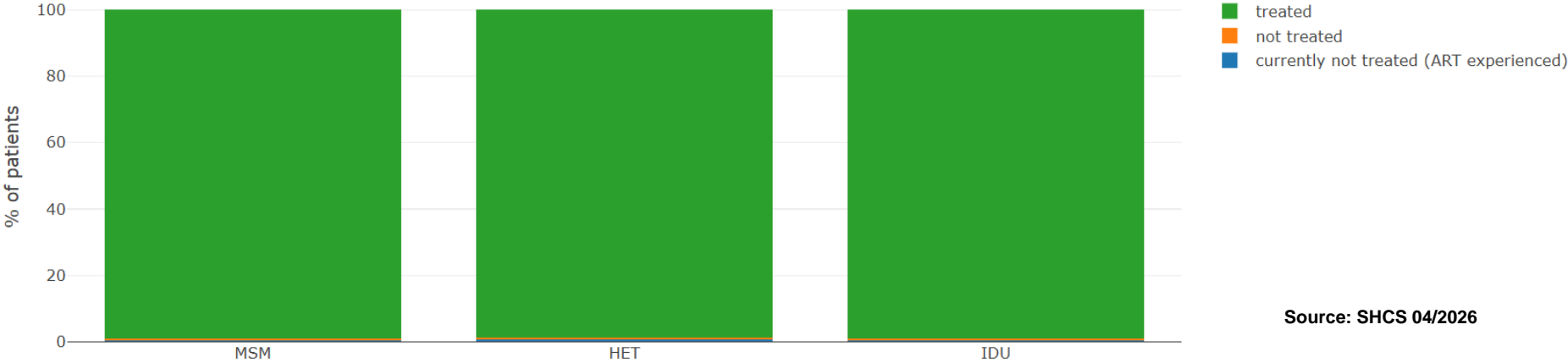
Source: SHCS 04/2026

Figure 16: Prescription of antiretroviral drug combinations to SHCS participants in 2024



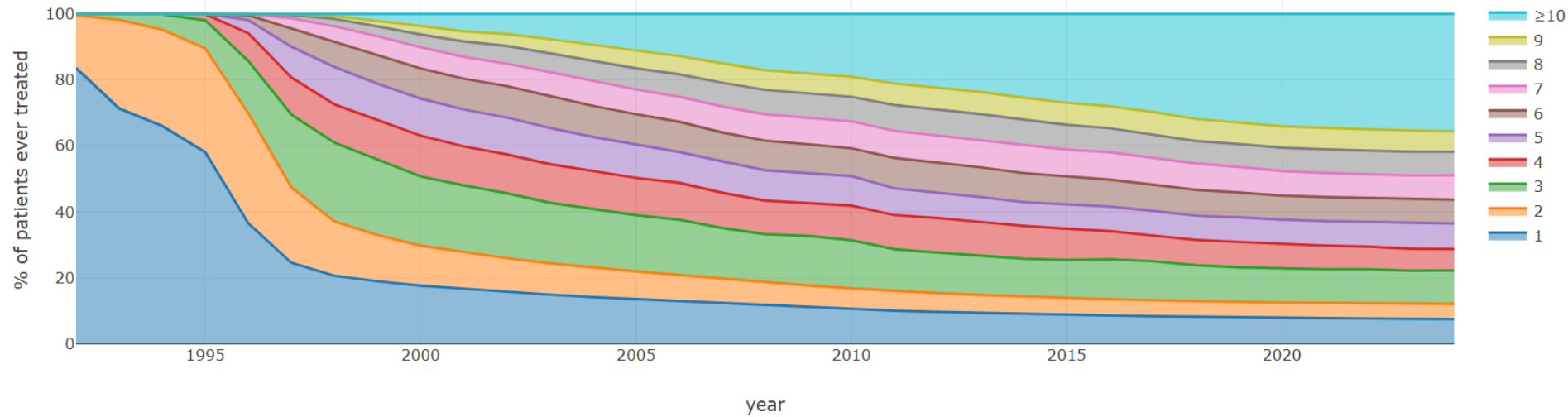
Source: SHCS 04/2026

Figure 17: Treatment status by presumed mode of HIV infection in the SHCS as of July 2024



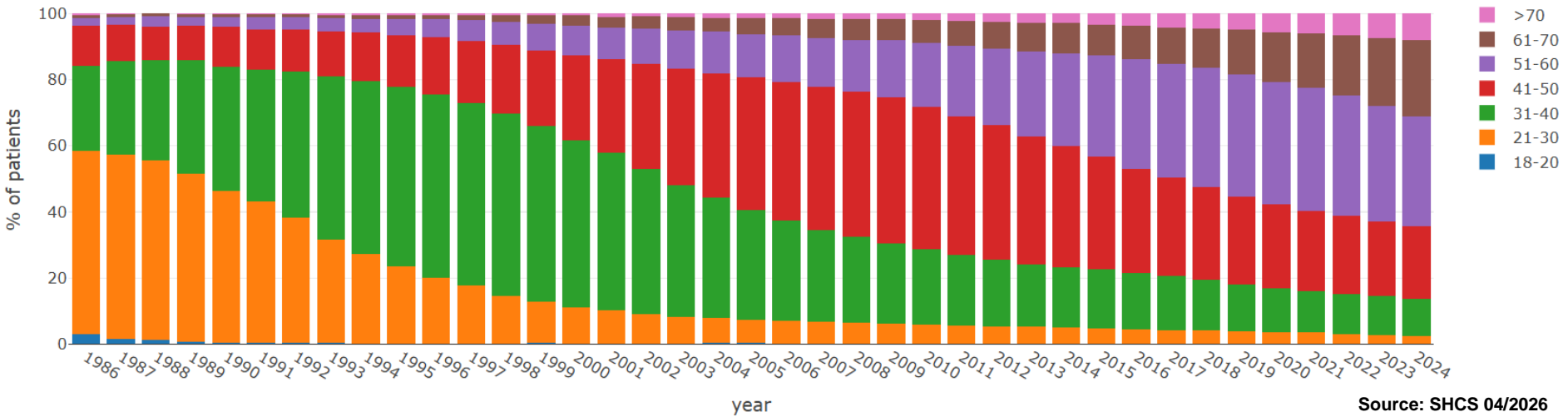
Source: SHCS 04/2026

Figure 18: Cumulated number of antiretroviral prescriptions in the SHCS, 1992 - 2024



Source: SHCS 04/2026

Figure 19: Age distribution of active patients by year in the SHCS, 1986 - 2024



Source: SHCS 04/2026